

Because every child deserves a chance to succeed.

Lifting All Students:

Why Pennsylvania Must Act Now to Fairly Fund Public Education and Secure Our Future



SEPTEMBER 2015



The Way Pennsylvania Funds Public Schools Isn't Working

The state's basic education funding system is broken. It does not provide enough resources to educate all students to academic standards. Even worse, Pennsylvania is one of three states in the country that does not follow an established formula for how basic education funding is distributed. That produces income and racial disparities and a wide gap between the wealthiest and poorest districts. It also means that state funding is so unpredictable from year to year that school districts cannot effectively budget or plan for the future.

In June, the bipartisan state Basic Education Funding Commission (BEFC) unanimously approved recommendations for an equitable new school funding formula. Yet, despite widespread support for this new approach, the BEFC formula remains only a recommendation as the state budget debate continues to drag on.

The Campaign for Fair Education Funding, a diverse group of more than 50 organizations committed to improving public education in Pennsylvania, has endorsed the proposed BEFC formula. But our Campaign believes that a new funding formula is only part of the solution. It must be accompanied by additional resources to restore recent funding cuts and fully fund the formula for the long-term. Our Campaign projects that an increased annual state investment of \$3.6 billion, phased in over six to eight years, is needed to close the current school funding gap. That investment must begin now.

The work of the BEFC is an example of what can be accomplished when the Governor's Administration and legislators work together. All sides must come together again to enact the BEFC's recommended funding formula and pass a budget that increases basic education funding this year by at least \$410 million.

This report demonstrates what is at stake if Pennsylvania lawmakers do not make a significant, long-term, and equitable investment in public education, starting now.

Failing to quickly remedy budget cuts made in recent years – and the glaring disparities in the way public education is funded – will result in even wider achievement gaps that will shortchange our children and continue to hold back our state's economy.

“We've taxed all we can tax, we've cut all we can cut. We kept our end of the bargain.” - *William Penn school board member Rafi Cave*¹





What's At Stake?

THE WIDEST FUNDING GAP IN THE COUNTRY

Federal data shows Pennsylvania has the widest funding gap between wealthy and poor school districts of any state in the country. State and local per-pupil spending in the poorest districts is 33 percent less than in Pennsylvania's wealthiest districts.²

This funding disparity affects rural, urban and suburban school districts across the state, and there is no rhyme or reason to why one school district gets more basic education funding than the next.

MONEY MATTERS WHEN IT COMES TO STUDENT PERFORMANCE

Research on school finance reform in other states found that sustained, long-term increases in per-pupil spending led to increases in educational attainment and the likelihood that poor children graduate from high school, which in turn increased future family income.

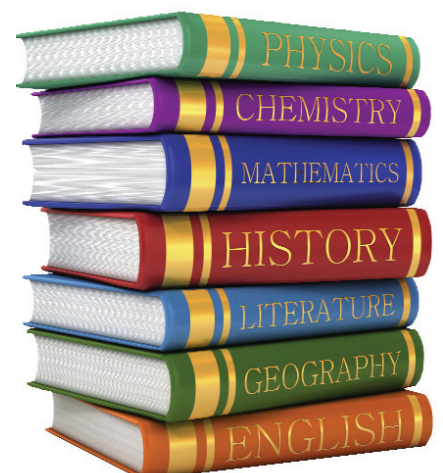
And while many factors – both inside and outside the classroom – can play a role in student success, the experience here in Pennsylvania and across the country demonstrates that increased investment, when used wisely, produces better results for our children:

- As state education funding in Pennsylvania increased by 40% from 2003 to 2010, test scores in the lowest-achieving districts increased by 50%.³
- Conversely, as state funding was cut since 2011 and our system grew more inequitable without a formula, state test scores dropped and the achievement gap did not close.⁴

Pennsylvania needs a student-driven, long-term, predictable education funding system with a formula that equitably distributes adequate state funding to ensure students in every public school meet academic standards and are prepared for success as adults.



“Quality education costs money. We cannot play political games with our children's future.” - Mike Faccinnetto, School Board President, Bethlehem Area School District⁵



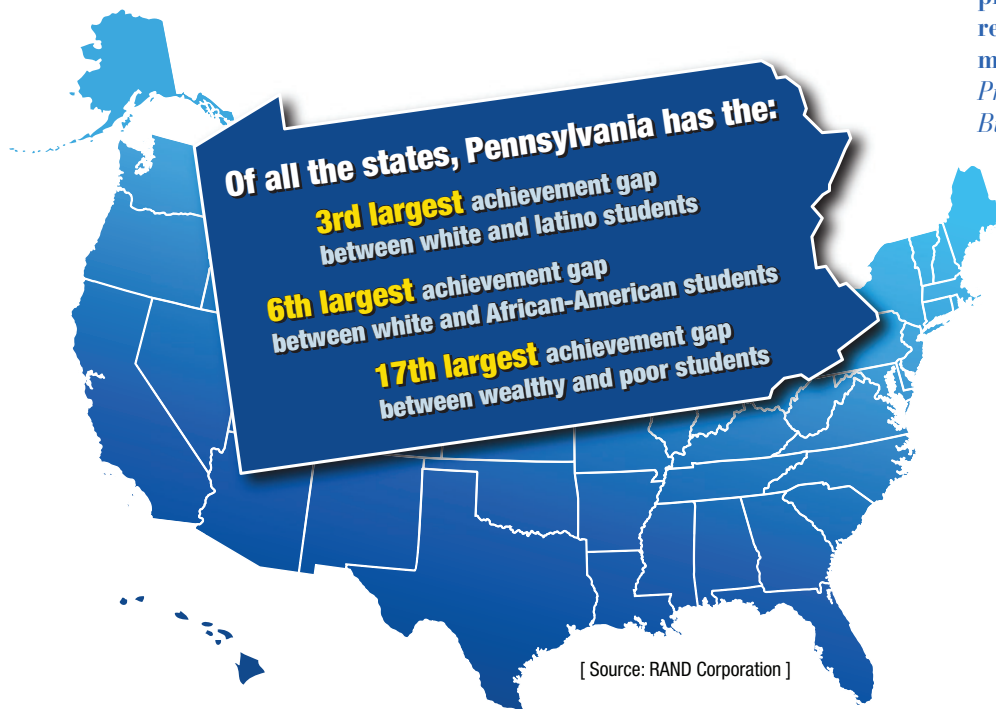


When the State Fails to Invest in Education, Achievement Gaps Widen, Creating a Ripple Effect in Our Economy

The strength of Pennsylvania's economy starts with our public schools, which are an essential part of the pipeline of future workers. Supporting our public schools so that young people emerge ready for a post-secondary education or a career is vital to the state's competitiveness.

Yet our public schools do not have a bottom line they can count on to educate students, which results in economic, racial and ethnic achievement gaps.

E “All of us — local and state taxpayers, individuals and businesses, parents and neighbors — share responsibility for building a future workforce that is productive and competitive with the rest of the world, so that we can all move forward.” - David W. Patti, President and CEO of the Pennsylvania Business Council ⁷



This not only leads to missed opportunities for individual students who do not achieve their potential, but it also creates a drag on the state's economy.

The RAND Corporation study found that had these achievement gaps been closed in 2003, the state's economy would have grown by a staggering \$12 to \$44 billion in 2014.⁶



The First Step to Fixing Pennsylvania's Unfair and Underfunded Education System: \$410 Million + A New Funding Formula

A new basic education funding formula must be combined with increased investment to ensure every child has an opportunity for an effective education no matter where that child lives.

Two school funding scenarios are on the table as Pennsylvania's budget talks continue. One proposal – contained in the Governor's proposed budget – increases basic education funding by \$410 million in fiscal 2015-16, while the other – included in the budget passed by the Legislature but vetoed by the Governor – proposes a considerably smaller increase of \$100 million.

See the Report Appendix to Learn How These Basic Education Funding Proposals Will Impact YOUR School District

To be sure, neither amount is enough to fully fund our public schools for the long term, but the larger investment in basic education is a true down payment on what is needed to ensure all students can succeed in meeting Pennsylvania's academic standards.



“For the past four years, school districts and local communities like ours have been forced to make tough revenue decisions. It is of the utmost importance for our children that the state pass a budget that puts the \$410 million in new state funds for schools in place before the school year begins.” - Upper Darby School District Superintendent Richard Dunlap⁸



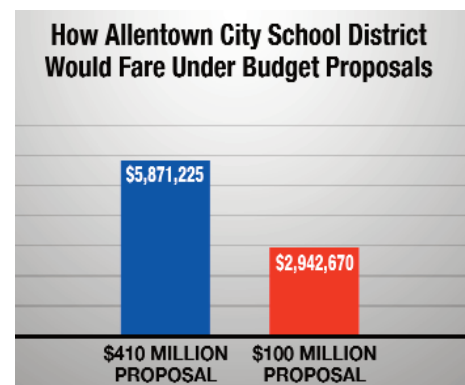
What These Two Funding Proposals Mean for Representative School Districts Across the State

It is important to see the impact that the state basic education funding proposals will have on local school districts. The Appendix to this report contains a comparison of funding increases under the two proposals for every school district in the state. Examples of how the two proposals would affect disparate school districts are provided here.

Allentown City School District

Lehigh County

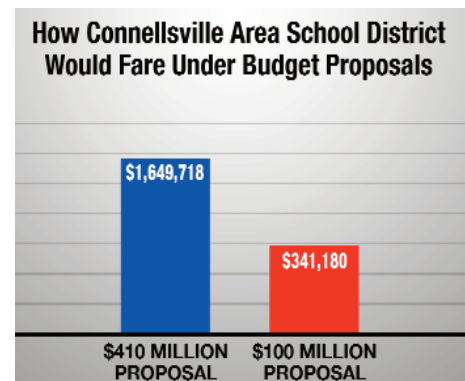
This school year, Allentown City School District has begun restoring just a portion of the 400 teachers and other staff it had cut over the prior four years,⁹ which have resulted in larger class sizes and cuts in library services, arts and other programs.¹⁰ The district needs additional state funding to continue its recovery. Under the proposed \$410 million statewide increase, the school district would receive \$2.9 million more than if the \$100 million increase is approved.



Connellsville Area School District

Fayette County

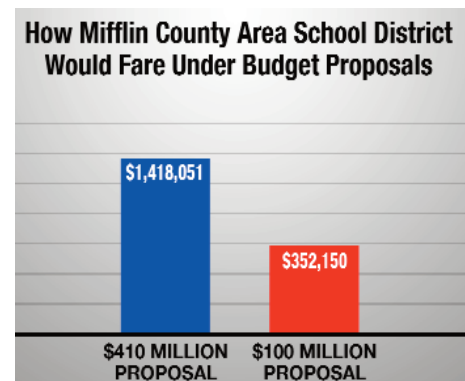
Connellsville Area School District in Fayette County has endured teacher furloughs and larger class sizes due to dwindling resources,¹¹ and is overly reliant on property taxes to fund schools.¹² Under the more significant state funding increase proposal, Connellsville would receive \$1.3 million more under a \$410 million increase than under the small funding increase.



Mifflin County School District

Mifflin County

Mifflin County School District has made many sacrifices due to budget cuts in recent years, and to the detriment of its students. Superintendent James Estep says that if the state doesn't change the way it funds public education, children will fall behind. Mifflin County would receive \$1.06 million more from the state under the \$410 million proposal.¹³



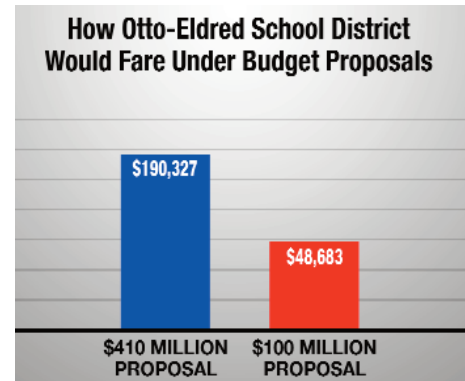


What These Two Funding Proposals Mean for Representative School Districts Across the State

Otto-Eldred School District

McKean County

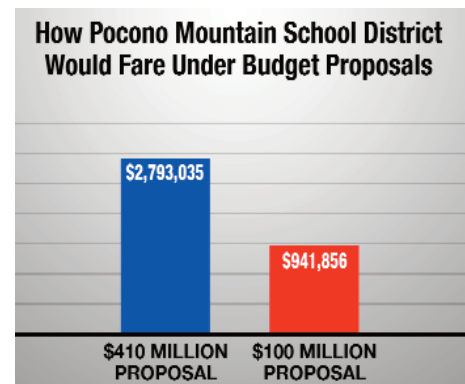
Otto-Eldred School District in McKean County has wrestled with difficult budget decisions. Superintendent Matt Splain says rural districts like Otto-Eldred “have very little capacity to bring in local tax dollars.”¹⁴ These districts rely more heavily on state funding and suffered from cuts in recent years. Otto-Eldred would receive \$141,644 more from the state under the \$410 million proposal compared to the \$100 million increase in the legislative budget proposal.



Pocono Mountain School District

Monroe County

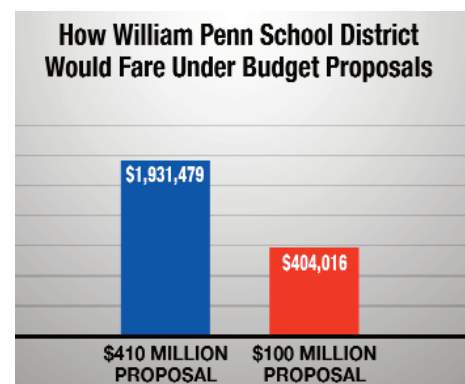
Pocono Mountain School District, a growing and increasingly diverse district in northeastern Pennsylvania, needs increased state funding for tutoring to continue closing the achievement gap among students in the district.¹⁵ The district would receive \$1.85 million more under the \$410 million proposal.



William Penn School District

Delaware County

William Penn School District “had to implement a 3 percent property tax increase last summer to afford its budget for the 2014-15 school year, although it was an extremely unpopular decision among residents.”¹⁶ It would receive \$1.52 million more in basic education funding under the \$410 million proposal.



The bottom line? Unless basic education funding is significantly increased and a new funding formula is implemented, our public schools will continue to be forced to make cuts and impose local tax increases that hurt our students and communities.



The Numbers Don't Lie, Yet Legislators Are Still Deadlocked on a 2015-16 State Budget

We need a basic education funding system that provides enough resources, in an equitable way, to educate all students to academic standards no matter where they live.

A recent report projecting the fiscal future for Pennsylvania school districts estimated that under the state's current basic education funding system, even with annual increases of 2 percent (higher than the \$100 million increase proposed by the legislature, which is a 1.8 percent increase):

- Most school districts will not have sufficient revenues over next three years to support their mandated and necessary expenditures; and
- Sixty percent of the districts in the state will face severe and prolonged program and staff reductions to balance their budgets, which will reduce the quality of education in those districts and substantially widen the academic and fiscal gaps with more well-off districts.¹⁷

The Campaign's take-away from that study: Without a new funding formula, combined with annual increases much larger than the \$100 million proposed by the Legislature, most school districts will have to continue cutting programs, courses and staff, or increase property taxes to get through each year.

On the other hand, if the proposed \$410 million funding increase is enacted, about 43 percent of districts surveyed by the Pennsylvania Association of School Administrators (PASA) and Pennsylvania Association of School Business Officials (PASBO) reported that staff reductions could be minimized, and 40 percent said they could reduce or eliminate planned tax increases.¹⁸

OUR ECONOMY REQUIRES IT

Temple University's Center on Regional Politics recently released a study by the RAND Corporation that estimates the potential economic benefit to Pennsylvania from raising test scores and high school graduation rates for low-performing students. The study found that closing the achievement gap between poor and wealthy students in Pennsylvania would produce benefits of \$2.8 to \$5.1 billion annually, through higher future earnings of students and lower societal costs of crime, incarceration and other negative outcomes.¹⁹

THE PEOPLE OF PENNSYLVANIA DEMAND IT

Pennsylvanians want the state to increase its support for public schools.

- Education is one of the most important problems facing Pennsylvania today.²⁰
- Pennsylvanians support increased funding for public schools by a margin of more than three to one.²¹

F“The lack of a state budget hurts those who are already struggling. Schools serving children with the greatest needs receive the most support from the state government. So it stands to reason that those most adversely affected by the budget stalemate will be those with the greatest challenges.” - *Pennsylvania School Boards Association Executive Director Nathan Mains*²²



The Governor and State Legislature Need to Come Together Now for Public Schools

There is no more pressing issue facing lawmakers than fixing Pennsylvania's broken public school funding system.

Pennsylvania must fundamentally change how basic education is funded so every student across the state has access to a quality education no matter where that student lives.

That requires two important steps:

- We need a sustainable, predictable and long-term funding method based on the real costs necessary to meet state academic standards. It must take into account factors such as student enrollment, challenges faced by students such as poverty or English language learning, the effect of charter school enrollment, and the unique characteristics of school districts, like population density, community wealth, and local taxing effort and capacity. The formula recommended by the BEFC addresses these factors.
- We need to provide sufficient state funding over the long-term, but begin with a substantial increase this budget year, so that schools can rebound from past funding cuts and close the wide spending gaps – and accompanying achievement gaps – between school districts.

To achieve this:

The Campaign for Fair Education Funding is calling on state lawmakers to adopt a budget that increases basic education funding by at least \$410 million to help restore past funding cuts, targeted at bringing districts back to the 2010 funding level as base year, and begin implementation of the new funding formula as unanimously adopted by the Basic Education Funding Commission.

From kindergarten to senior year, every school year in a child's life is vital. Pennsylvania's students should not have to wait any longer.

The time to act is now.

Learn More and Follow the Campaign

www.fairfundingpa.org

 Twitter: @FairFundingPA

 Facebook: fairfundingpa



Hundreds rally for fair funding at the state Capitol in June



The Campaign for Fair Education Funding is made up of more than 50 member organizations representing educators, labor, business leaders, faith-based organizations, child advocates, charter schools, traditional public schools, with representatives from rural, urban and growing school districts.



How Budget Proposals Would Affect Pennsylvania School Districts

School District	\$410 Million Funding Increase	\$100 Million Funding Increase
ADAMS COUNTY		
Bermudian Springs SD	\$359,987	\$80,596
Conewago Valley SD	\$550,187	\$168,435
Fairfield Area SD	\$219,807	\$37,072
Gettysburg Area SD	\$508,984	\$127,297
Littlestown Area SD	\$378,380	\$68,705
Upper Adams SD	\$343,507	\$85,457
ALLEGHENY COUNTY		
Allegheny Valley SD	\$106,960	\$49,416
Avonworth SD	\$94,271	\$32,688
Baldwin-Whitehall SD	\$589,366	\$198,032
Bethel Park SD	\$367,785	\$116,418
Brentwood Borough SD	\$211,145	\$91,164
Carlynton SD	\$207,540	\$91,991
Chartiers Valley SD	\$262,324	\$115,703
Clairton City SD	\$383,258	\$143,325
Cornell SD	\$168,486	\$102,636
Deer Lakes SD	\$219,838	\$79,001
Duquesne City SD	\$511,457	\$178,455
East Allegheny SD	\$616,783	\$189,027
Elizabeth Forward SD	\$392,810	\$97,575
Fox Chapel Area SD	\$166,480	\$141,504
Gateway SD	\$605,150	\$144,103
Hampton Township SD	\$205,387	\$71,734
Highlands SD	\$477,611	\$202,951
Keystone Oaks SD	\$324,876	\$72,119
McKeesport Area SD	\$1,627,282	\$412,803
Montour SD	\$284,137	\$81,738
Moon Area SD	\$313,016	\$131,849
Mt Lebanon SD	\$248,552	\$145,675
North Allegheny SD	\$385,883	\$155,058
North Hills SD	\$328,753	\$136,931
Northgate SD	\$209,253	\$78,086
Penn Hills SD	\$2,239,885	\$264,029
Pine-Richland SD	\$273,751	\$94,983
Pittsburgh SD	\$13,313,472	\$1,745,217
Plum Borough SD	\$512,203	\$120,681
Quaker Valley SD	\$81,178	\$65,689
Riverview SD	\$139,656	\$56,124
Shaler Area SD	\$572,054	\$147,187
South Allegheny SD	\$368,793	\$106,182

APPENDIX



School District	\$410 Million Funding Increase	\$100 Million Funding Increase
ALLEGHENY COUNTY (CONTINUED)		
South Fayette Township SD	\$105,750	\$94,600
South Park SD	\$242,823	\$68,600
Steel Valley SD	\$590,579	\$127,523
Sto-Rox SD	\$763,905	\$319,316
Upper Saint Clair SD	\$157,650	\$78,984
West Allegheny SD	\$254,996	\$117,724
West Jefferson Hills SD	\$271,200	\$83,177
West Mifflin Area SD	\$404,607	\$176,584
Wilkinsburg Borough SD	\$1,040,704	\$148,786
Woodland Hills SD	\$2,359,939	\$406,887
ARMSTRONG COUNTY		
Apollo-Ridge SD	\$323,169	\$98,234
Armstrong SD	\$1,061,094	\$301,671
Freeport Area SD	\$252,110	\$66,453
Leechburg Area SD	\$140,860	\$48,794
BEAVER COUNTY		
Aliquippa SD	\$556,100	\$155,004
Ambridge Area SD	\$621,007	\$181,226
Beaver Area SD	\$282,910	\$76,652
Big Beaver Falls Area SD	\$556,959	\$200,867
Blackhawk SD	\$340,312	\$89,198
Central Valley SD	\$329,530	\$66,863
Freedom Area SD	\$294,532	\$61,879
Hopewell Area SD	\$583,477	\$59,817
Midland Borough SD	\$196,032	\$56,446
New Brighton Area SD	\$423,855	\$115,464
Riverside Beaver County SD	\$310,209	\$53,323
Rochester Area SD	\$320,238	\$48,090
South Side Area SD	\$240,172	\$34,182
Western Beaver County SD	\$165,679	\$27,159
BEDFORD COUNTY		
Bedford Area SD	\$706,798	\$97,095
Chestnut Ridge SD	\$286,812	\$72,306
Everett Area SD	\$275,227	\$90,344
Northern Bedford County SD	\$189,175	\$41,654
Tussey Mountain SD	\$286,451	\$85,088
BERKS COUNTY		
Antietam SD	\$157,656	\$70,470
Boyetown Area SD	\$655,424	\$219,702
Brandywine Heights Area SD	\$198,135	\$48,082
Conrad Weiser Area SD	\$343,229	\$117,817

APPENDIX



School District	\$410 Million Funding Increase	\$100 Million Funding Increase
BERKS COUNTY (CONTINUED)		
Daniel Boone Area SD	\$420,372	\$105,381
Exeter Township SD	\$605,405	\$141,782
Fleetwood Area SD	\$320,739	\$103,534
Governor Mifflin SD	\$323,938	\$162,070
Hamburg Area SD	\$359,503	\$101,181
Kutztown Area SD	\$179,306	\$46,454
Muhlenberg SD	\$268,658	\$177,976
Oley Valley SD	\$252,627	\$43,817
Reading SD	\$6,370,330	\$3,858,110
Schuylkill Valley SD	\$158,397	\$83,038
Tulpehocken Area SD	\$240,920	\$66,748
Twin Valley SD	\$322,098	\$120,939
Wilson SD	\$402,421	\$258,572
Wyomissing Area SD	\$80,387	\$82,493
BLAIR COUNTY		
Altoona Area SD	\$1,771,913	\$444,040
Bellwood-Antis SD	\$182,567	\$43,570
Claysburg-Kimmel SD	\$186,916	\$61,277
Holidaysburg Area SD	\$435,170	\$122,812
Spring Cove SD	\$292,096	\$76,445
Tyrone Area SD	\$311,411	\$68,830
Williamsburg Community SD	\$128,330	\$35,842
BRADFORD COUNTY		
Athens Area SD	\$500,869	\$129,551
Canton Area SD	\$223,282	\$78,946
Northeast Bradford SD	\$200,461	\$53,649
Sayre Area SD	\$214,449	\$61,086
Towanda Area SD	\$350,038	\$88,151
Troy Area SD	\$429,489	\$86,446
Wyalusing Area SD	\$299,094	\$81,792
BUCKS COUNTY		
Bensalem Township SD	\$1,596,796	\$309,906
Bristol Borough SD	\$294,646	\$83,930
Bristol Township SD	\$1,835,883	\$294,281
Centennial SD	\$459,076	\$182,178
Central Bucks SD	\$780,206	\$460,694
Council Rock SD	\$385,513	\$156,748
Morrisville Borough SD	\$222,896	\$31,973
Neshaminy SD	\$966,051	\$211,344
New Hope-Solebury SD	\$35,920	\$22,059
Palisades SD	\$97,372	\$53,338

APPENDIX



School District	\$410 Million Funding Increase	\$100 Million Funding Increase
BUCKS COUNTY (CONTINUED)		
Penndridge SD	\$609,420	\$233,841
Pennsbury SD	\$935,994	\$239,056
Quakertown Community SD	\$565,511	\$202,489
BUTLER COUNTY		
Butler Area SD	\$1,178,305	\$307,779
Karns City Area SD	\$347,774	\$76,436
Mars Area SD	\$238,427	\$72,883
Moniteau SD	\$466,593	\$72,377
Seneca Valley SD	\$629,390	\$165,297
Slippery Rock Area SD	\$450,952	\$84,098
South Butler County SD	\$360,627	\$84,838
CAMBRIA COUNTY		
Blacklick Valley SD	\$160,750	\$44,991
Cambria Heights SD	\$274,027	\$71,531
Central Cambria SD	\$263,305	\$53,446
Conemaugh Valley SD	\$182,759	\$43,964
Ferndale Area SD	\$186,085	\$54,810
Forest Hills SD	\$398,356	\$70,736
Greater Johnstown SD	\$1,024,603	\$397,366
Northern Cambria SD	\$258,283	\$64,244
Penn Cambria SD	\$366,522	\$70,786
Portage Area SD	\$202,616	\$48,215
Richland SD	\$103,967	\$81,772
Westmont Hilltop SD	\$92,120	\$49,751
CAMERON COUNTY		
Cameron County SD	\$165,652	\$53,592
CARBON COUNTY		
Jim Thorpe Area SD	\$263,537	\$154,819
Lehighton Area SD	\$437,281	\$105,499
Palmerton Area SD	\$383,147	\$99,323
Panther Valley SD	\$505,805	\$220,555
Weatherly Area SD	\$127,046	\$39,782
CENTRE COUNTY		
Bald Eagle Area SD	\$344,149	\$83,987
Bellefonte Area SD	\$498,644	\$128,650
Penns Valley Area SD	\$226,147	\$92,112
State College Area SD	\$751,344	\$318,639

APPENDIX



School District	\$410 Million Funding Increase	\$100 Million Funding Increase
CHESTER COUNTY		
Avon Grove SD	\$1,414,421	\$147,832
Coatesville Area SD	\$3,170,506	\$367,448
Downingtown Area SD	\$1,325,092	\$251,247
Great Valley SD	\$194,185	\$63,906
Kennett Consolidated SD	\$659,009	\$123,263
Octorara Area SD	\$570,270	\$136,060
Owen J Roberts SD	\$290,541	\$132,484
Oxford Area SD	\$1,119,643	\$219,994
Phoenixville Area SD	\$655,850	\$116,636
Tredyffrin-Easttown SD	\$138,406	\$85,870
Unionville-Chadds Ford SD	\$140,025	\$56,747
West Chester Area SD	\$1,068,765	\$235,850
CLARION COUNTY		
Allegheny-Clarion Valley SD	\$171,231	\$32,665
Clarion Area SD	\$85,071	\$56,382
Clarion-Limestone Area SD	\$182,837	\$62,114
Keystone SD	\$207,413	\$61,114
North Clarion County SD	\$91,622	\$21,506
Redbank Valley SD	\$221,225	\$63,706
Union SD	\$188,051	\$47,805
CLEARFIELD COUNTY		
Clearfield Area SD	\$633,506	\$153,382
Curwensville Area SD	\$213,644	\$83,494
Dubois Area SD	\$717,382	\$232,124
Glendale SD	\$224,158	\$78,079
Harmony Area SD	\$97,933	\$28,492
Moshannon Valley SD	\$309,857	\$73,842
Philipsburg-Osceola Area SD	\$356,578	\$117,929
West Branch Area SD	\$337,009	\$67,986
CLINTON COUNTY		
Keystone Central SD	\$1,492,781	\$286,182
COLUMBIA COUNTY		
Benton Area SD	\$128,100	\$53,931
Berwick Area SD	\$731,560	\$208,614
Bloomsburg Area SD	\$247,518	\$112,398
Central Columbia SD	\$268,229	\$67,843
Millville Area SD	\$114,606	\$45,561
Southern Columbia Area SD	\$192,468	\$58,987

APPENDIX



School District	\$410 Million Funding Increase	\$100 Million Funding Increase
CRAWFORD COUNTY		
Conneaut SD	\$631,783	\$134,028
Crawford Central SD	\$869,026	\$265,912
Penncrest SD	\$706,089	\$161,688
CUMBERLAND COUNTY		
Big Spring SD	\$626,552	\$113,026
Camp Hill SD	\$58,477	\$45,447
Carlisle Area SD	\$603,297	\$268,982
Cumberland Valley SD	\$560,239	\$194,792
East Pennsboro Area SD	\$336,690	\$99,123
Mechanicsburg Area SD	\$350,500	\$150,924
Shippensburg Area SD	\$560,690	\$168,475
South Middleton SD	\$221,405	\$63,276
DAUPHIN COUNTY		
Central Dauphin SD	\$1,288,262	\$380,840
Derry Township SD	\$168,941	\$138,355
Halifax Area SD	\$234,038	\$56,339
Harrisburg City SD	\$3,379,363	\$1,238,073
Lower Dauphin SD	\$495,627	\$132,156
Middletown Area SD	\$440,853	\$137,890
Millersburg Area SD	\$145,852	\$25,025
Steelton-Highspire SD	\$504,240	\$144,205
Susquehanna Township SD	\$291,609	\$81,480
Upper Dauphin Area SD	\$241,921	\$72,456
DELAWARE COUNTY		
Chester-Upland SD	\$8,644,971	\$1,351,352
Chichester SD	\$696,216	\$165,301
Garnet Valley SD	\$171,730	\$111,627
Haverford Township SD	\$177,659	\$91,364
Interboro SD	\$592,498	\$159,452
Marple Newtown SD	\$122,485	\$62,738
Penn-Delco SD	\$322,830	\$90,973
Radnor Township SD	\$82,560	\$53,945
Ridley SD	\$598,260	\$253,061
Rose Tree Media SD	\$157,915	\$56,242
Southeast Delco SD	\$1,328,842	\$361,444
Springfield SD	\$121,911	\$89,448
Upper Darby SD	\$2,373,622	\$845,782
Wallingford-Swarthmore SD	\$157,096	\$62,230
William Penn SD	\$1,931,479	\$404,016

APPENDIX



School District	\$410 Million Funding Increase	\$100 Million Funding Increase
ELK COUNTY		
Johnsonburg Area SD	\$138,753	\$42,452
Ridgway Area SD	\$167,683	\$59,437
Saint Marys Area SD	\$347,914	\$79,924
ERIE COUNTY		
Corry Area SD	\$628,516	\$211,958
Erie City SD	\$4,377,026	\$1,781,392
Fairview SD	\$110,012	\$53,303
Fort Leboeuf SD	\$314,341	\$98,546
General Mclane SD	\$325,721	\$82,925
Girard SD	\$409,279	\$114,908
Harbor Creek SD	\$282,946	\$57,856
Iroquois SD	\$223,772	\$60,728
Millcreek Township SD	\$620,774	\$250,418
North East SD	\$299,627	\$100,366
Northwestern SD	\$428,363	\$73,994
Union City Area SD	\$254,561	\$80,745
Wattsburg Area SD	\$273,652	\$52,274
FAYETTE COUNTY		
Albert Gallatin Area SD	\$1,079,259	\$297,167
Brownsville Area SD	\$613,050	\$160,887
Connellsville Area SD	\$1,649,718	\$341,180
Frazier SD	\$179,653	\$63,233
Laurel Highlands SD	\$786,690	\$194,549
Uniontown Area SD	\$680,169	\$245,319
FOREST COUNTY		
Forest Area SD	\$128,691	\$49,938
FRANKLIN COUNTY		
Chambersburg Area SD	\$1,655,134	\$460,766
Fannett-Metal SD	\$117,341	\$28,637
Greencastle-Antrim SD	\$305,227	\$101,556
Tuscarora SD	\$468,256	\$110,312
Waynesboro Area SD	\$747,730	\$138,277
FULTON COUNTY		
Central Fulton SD	\$199,050	\$57,237
Forbes Road SD	\$99,890	\$26,222
Southern Fulton SD	\$174,519	\$36,531
GREENE COUNTY		
Carmichaels Area SD	\$316,876	\$82,781
Central Greene SD	\$448,017	\$109,299
Jefferson-Morgan SD	\$261,929	\$55,736

APPENDIX



School District	\$410 Million Funding Increase	\$100 Million Funding Increase
GREENE COUNTY (CONTINUED)		
Southeastern Greene SD	\$257,979	\$38,009
West Greene SD	\$210,107	\$78,373
HUNTINGDON COUNTY		
Huntingdon Area SD	\$432,798	\$81,047
Juniata Valley SD	\$158,541	\$44,236
Mount Union Area SD	\$475,920	\$115,068
Southern Huntingdon County SD	\$350,033	\$64,830
INDIANA COUNTY		
Blairsville-Saltsburg SD	\$375,418	\$100,480
Homer-Center SD	\$150,365	\$67,052
Indiana Area SD	\$376,350	\$143,013
Marion Center Area SD	\$249,244	\$63,372
Penns Manor Area SD	\$206,959	\$51,777
Purchase Line SD	\$245,594	\$67,398
United SD	\$238,405	\$67,087
JEFFERSON COUNTY		
Brockway Area SD	\$177,411	\$55,549
Brookville Area SD	\$277,375	\$89,286
Punxsutawney Area SD	\$601,943	\$102,480
JUNIATA COUNTY		
Juniata County SD	\$686,434	\$112,897
LACKAWANNA COUNTY		
Abington Heights SD	\$278,750	\$83,382
Carbondale Area SD	\$487,174	\$215,353
Dunmore SD	\$209,068	\$53,714
Lakeland SD	\$306,802	\$55,537
Mid Valley SD	\$173,674	\$90,862
North Pocono SD	\$455,977	\$131,429
Old Forge SD	\$205,746	\$31,873
Riverside SD	\$190,897	\$106,599
Scranton SD	\$2,253,971	\$1,037,386
Valley View SD	\$383,260	\$115,591
LANCASTER COUNTY		
Cocalico SD	\$376,552	\$130,340
Columbia Borough SD	\$484,166	\$163,362
Conestoga Valley SD	\$197,341	\$241,484
Donegal SD	\$379,434	\$136,724
Eastern Lancaster County SD	\$272,282	\$122,749
Elizabethtown Area SD	\$445,708	\$143,594

APPENDIX



School District	\$410 Million Funding Increase	\$100 Million Funding Increase
LANCASTER COUNTY (CONTINUED)		
Ephrata Area SD	\$453,006	\$186,291
Hempfield SD	\$694,087	\$212,144
Lampeter-Strasburg SD	\$214,022	\$113,765
Lancaster SD	\$2,778,254	\$1,828,529
Manheim Central SD	\$333,218	\$103,315
Manheim Township SD	\$308,256	\$234,841
Penn Manor SD	\$599,297	\$193,268
Pequea Valley SD	\$163,179	\$66,913
Solanco SD	\$406,087	\$141,884
Warwick SD	\$519,266	\$166,395
LAWRENCE COUNTY		
Ellwood City Area SD	\$414,117	\$103,800
Laurel SD	\$290,233	\$54,339
Mohawk Area SD	\$319,391	\$67,905
Neshannock Township SD	\$144,491	\$46,495
New Castle Area SD	\$986,120	\$435,285
Shenango Area SD	\$226,845	\$47,073
Union Area SD	\$158,896	\$52,692
Wilmington Area SD	\$277,015	\$51,750
LEBANON COUNTY		
Annville-Cleona SD	\$202,992	\$58,682
Cornwall-Lebanon SD	\$479,395	\$148,930
Eastern Lebanon County SD	\$268,651	\$104,144
Lebanon SD	\$1,054,487	\$729,380
Northern Lebanon SD	\$467,372	\$75,576
Palmyra Area SD	\$341,009	\$115,104
LEHIGH COUNTY		
Allentown City SD	\$5,871,225	\$2,942,670
Catasauqua Area SD	\$247,866	\$87,175
East Penn SD	\$831,880	\$276,782
Northern Lehigh SD	\$426,719	\$76,321
Northwestern Lehigh SD	\$252,824	\$58,815
Parkland SD	\$501,922	\$290,975
Salisbury Township SD	\$155,130	\$53,301
Southern Lehigh SD	\$234,104	\$83,914
Whitehall-Coplay SD	\$446,932	\$210,857
LUZERNE COUNTY		
Crestwood SD	\$345,542	\$67,284
Dallas SD	\$193,345	\$81,193
Greater Nanticoke Area SD	\$624,510	\$197,735
Hanover Area SD	\$418,388	\$188,826

APPENDIX



School District	\$410 Million Funding Increase	\$100 Million Funding Increase
LUZERNE COUNTY (CONTINUED)		
Hazleton Area SD	\$1,484,899	\$771,438
Lake-Lehman SD	\$309,469	\$65,503
Northwest Area SD	\$258,236	\$51,082
Pittston Area SD	\$460,483	\$166,161
Wilkes-Barre Area SD	\$1,525,153	\$955,479
Wyoming Area SD	\$338,939	\$107,389
Wyoming Valley West SD	\$1,236,362	\$373,772
LYCOMING COUNTY		
East Lycoming SD	\$269,280	\$72,897
Jersey Shore Area SD	\$631,396	\$128,248
Loyalsock Township SD	\$123,550	\$76,943
Montgomery Area SD	\$123,127	\$53,604
Montoursville Area SD	\$243,016	\$80,013
Muncy SD	\$119,941	\$59,988
South Williamsport Area SD	\$226,588	\$63,528
Williamsport Area SD	\$1,399,757	\$455,795
MCKEAN COUNTY		
Bradford Area SD	\$578,452	\$173,170
Kane Area SD	\$295,032	\$90,704
Otto-Eldred SD	\$190,327	\$48,683
Port Allegany SD	\$284,329	\$74,317
Smethport Area SD	\$194,856	\$62,689
MERCER COUNTY		
Commodore Perry SD	\$124,104	\$24,740
Farrell Area SD	\$360,670	\$133,432
Greenville Area SD	\$329,960	\$92,215
Grove City Area SD	\$450,201	\$57,112
Hermitage SD	\$283,432	\$84,743
Jamestown Area SD	\$101,692	\$35,081
Lakeview SD	\$241,859	\$55,847
Mercer Area SD	\$259,348	\$49,532
Reynolds SD	\$322,833	\$70,054
Sharon City SD	\$759,668	\$290,724
Sharpsville Area SD	\$256,533	\$65,863
West Middlesex Area SD	\$273,206	\$57,741
MIFFLIN COUNTY		
Mifflin County SD	\$1,418,051	\$352,150

APPENDIX



School District	\$410 Million Funding Increase	\$100 Million Funding Increase
MONROE COUNTY		
East Stroudsburg Area SD	\$1,674,836	\$522,523
Pleasant Valley SD	\$1,416,074	\$206,871
Pocono Mountain SD	\$2,793,035	\$941,856
Stroudsburg Area SD	\$923,916	\$350,007
MONTGOMERY COUNTY		
Abington SD	\$350,422	\$205,904
Bryn Athyn SD	\$206	\$37
Cheltenham Township SD	\$326,166	\$121,149
Colonial SD	\$127,262	\$82,076
Hatboro-Horsham SD	\$236,941	\$117,723
Jenkintown SD	\$20,553	\$21,420
Lower Merion SD	\$173,252	\$87,922
Lower Moreland Township SD	\$57,219	\$52,509
Methacton SD	\$288,262	\$87,818
Norristown Area SD	\$1,750,601	\$347,479
North Penn SD	\$570,297	\$281,805
Perkiomen Valley SD	\$327,162	\$129,403
Pottsgrove SD	\$435,630	\$104,315
Pottstown SD	\$806,776	\$383,887
Souderton Area SD	\$698,739	\$186,913
Springfield Township SD	\$71,606	\$44,044
Spring-Ford Area SD	\$459,250	\$217,940
Upper Dublin SD	\$99,005	\$79,970
Upper Merion Area SD	\$155,794	\$94,080
Upper Moreland Township SD	\$157,772	\$112,518
Upper Perkiomen SD	\$430,512	\$93,960
Wissahickon SD	\$131,043	\$63,355
MONTOUR COUNTY		
Danville Area SD	\$365,856	\$99,146
NORTHAMPTON COUNTY		
Bangor Area SD	\$659,395	\$124,234
Bethlehem Area SD	\$3,765,380	\$878,287
Easton Area SD	\$1,559,397	\$428,674
Nazareth Area SD	\$500,910	\$158,575
Northampton Area SD	\$915,905	\$203,664
Pen Argyl Area SD	\$346,146	\$85,263
Saucon Valley SD	\$201,920	\$81,263
Wilson Area SD	\$440,592	\$100,549

APPENDIX



School District	\$410 Million Funding Increase	\$100 Million Funding Increase
NORTHUMBERLAND COUNTY		
Line Mountain SD	\$253,554	\$78,444
Milton Area SD	\$490,663	\$120,255
Mount Carmel Area SD	\$377,223	\$101,203
Shamokin Area SD	\$569,580	\$149,055
Shikellamy SD	\$698,913	\$228,358
Warrior Run SD	\$269,889	\$60,776
PERRY COUNTY		
Greenwood SD	\$145,190	\$40,849
Newport SD	\$228,061	\$68,527
Susquenita SD	\$442,537	\$42,329
West Perry SD	\$601,761	\$94,103
PHILADELPHIA COUNTY		
Philadelphia City SD	\$141,678,430	\$18,780,023
PIKE COUNTY		
Delaware Valley SD	\$731,824	\$199,278
POTTER COUNTY		
Austin Area SD	\$31,335	\$19,333
Coudersport Area SD	\$143,995	\$55,214
Galeton Area SD	\$112,534	\$30,634
Northern Potter SD	\$156,084	\$38,069
Oswayo Valley SD	\$165,401	\$43,151
SCHUYLKILL COUNTY		
Blue Mountain SD	\$365,865	\$87,922
Mahanoy Area SD	\$300,711	\$104,410
Minersville Area SD	\$269,356	\$72,581
North Schuylkill SD	\$439,156	\$111,841
Pine Grove Area SD	\$391,706	\$69,156
Pottsville Area SD	\$652,213	\$200,208
Saint Clair Area SD	\$162,124	\$57,192
Schuylkill Haven Area SD	\$254,053	\$68,746
Shenandoah Valley SD	\$286,701	\$172,404
Tamaqua Area SD	\$355,332	\$115,830
Tri-Valley SD	\$129,782	\$38,771
Williams Valley SD	\$349,216	\$55,686
SNYDER COUNTY		
Midd-West SD	\$445,991	\$158,893
Selingsgrove Area SD	\$425,399	\$152,965

APPENDIX



School District	\$410 Million Funding Increase	\$100 Million Funding Increase
SOMERSET COUNTY		
Berlin Brothersvalley SD	\$189,169	\$53,696
Conemaugh Township Area SD	\$179,885	\$29,955
Meyersdale Area SD	\$236,856	\$42,787
North Star SD	\$283,052	\$57,515
Rockwood Area SD	\$126,982	\$45,462
Salisbury-Elk Lick SD	\$62,652	\$17,780
Shade-Central City SD	\$133,288	\$42,037
Shanksville-Stonycreek SD	\$56,162	\$26,150
Somerset Area SD	\$379,079	\$160,794
Turkeyfoot Valley Area SD	\$93,632	\$27,833
Windber Area SD	\$224,983	\$61,192
SULLIVAN COUNTY		
Sullivan County SD	\$103,080	\$57,706
SUSQUEHANNA COUNTY		
Blue Ridge SD	\$241,475	\$69,737
Elk Lake SD	\$297,323	\$57,526
Forest City Regional SD	\$174,955	\$46,616
Montrose Area SD	\$356,667	\$55,743
Mountain View SD	\$294,755	\$48,526
Susquehanna Community SD	\$211,739	\$69,601
TIOGA COUNTY		
Northern Tioga SD	\$564,495	\$147,931
Southern Tioga SD	\$516,615	\$105,101
Wellsboro Area SD	\$241,488	\$89,668
UNION COUNTY		
Lewisburg Area SD	\$143,695	\$125,871
Mifflinburg Area SD	\$429,418	\$107,860
VENANGO COUNTY		
Cranberry Area SD	\$246,191	\$46,463
Franklin Area SD	\$574,114	\$118,496
Oil City Area SD	\$519,440	\$194,615
Titusville Area SD	\$432,458	\$186,820
Valley Grove SD	\$237,416	\$64,353
WARREN COUNTY		
Warren County SD	\$1,743,654	\$267,792
WASHINGTON COUNTY		
Avella Area SD	\$126,366	\$16,948
Bentworth SD	\$239,864	\$57,663
Bethlehem-Center SD	\$285,254	\$59,018
Burgettstown Area SD	\$328,140	\$48,741

APPENDIX



School District	\$410 Million Funding Increase	\$100 Million Funding Increase
WASHINGTON COUNTY (CONTINUED)		
California Area SD	\$211,201	\$45,368
Canon-Mcmillan SD	\$537,739	\$198,641
Charleroi SD	\$387,777	\$126,444
Chartiers-Houston SD	\$177,358	\$32,442
Fort Cherry SD	\$214,113	\$32,029
McGuffey SD	\$589,363	\$65,952
Peters Township SD	\$241,275	\$81,162
Ringgold SD	\$896,065	\$139,520
Trinity Area SD	\$538,787	\$111,196
Washington SD	\$512,366	\$134,867
WAYNE COUNTY		
Wallenpaupack Area SD	\$332,626	\$197,763
Wayne Highlands SD	\$408,163	\$190,167
Western Wayne SD	\$379,713	\$100,289
WESTMORELAND COUNTY		
Belle Vernon Area SD	\$452,665	\$117,546
Burrell SD	\$255,360	\$85,439
Derry Area SD	\$435,850	\$116,844
Franklin Regional SD	\$300,130	\$81,045
Greater Latrobe SD	\$499,121	\$184,592
Greensburg Salem SD	\$512,971	\$151,478
Hempfield Area SD	\$703,926	\$227,837
Jeannette City SD	\$301,802	\$75,758
Kiski Area SD	\$634,311	\$176,822
Ligonier Valley SD	\$277,673	\$77,561
Monessen City SD	\$235,711	\$116,519
Mount Pleasant Area SD	\$393,518	\$99,137
New Kensington-Arnold SD	\$683,602	\$267,559
Norwin SD	\$646,106	\$131,795
Penn-Trafford SD	\$508,419	\$96,479
Southmoreland SD	\$429,808	\$98,650
Yough SD	\$504,679	\$100,384
WYOMING COUNTY		
Lackawanna Trail SD	\$236,421	\$39,000
Tunkhannock Area SD	\$482,546	\$144,994
YORK COUNTY		
Central York SD	\$375,191	\$254,887
Dallastown Area SD	\$419,485	\$261,162
Dover Area SD	\$432,635	\$184,313
Eastern York SD	\$414,471	\$109,993
Hanover Public SD	\$270,861	\$133,292

APPENDIX



School District	\$410 Million Funding Increase	\$100 Million Funding Increase
YORK COUNTY (CONTINUED)		
Northeastern York SD	\$487,106	\$197,194
Northern York County SD	\$381,226	\$93,522
Red Lion Area SD	\$842,884	\$253,946
South Eastern SD	\$470,984	\$122,562
South Western SD	\$514,731	\$118,967
Southern York County SD	\$332,112	\$86,165
Spring Grove Area SD	\$565,637	\$135,078
West Shore SD	\$1,107,249	\$249,863
West York Area SD	\$392,701	\$153,142
York City SD	\$4,713,801	\$1,860,751
York Suburban SD	\$208,857	\$105,484



Works Cited

- ¹ "School Officials Slam Pa. Budget Stalemate." Philly.com. N.p., 20 Aug. 2015. Web. 31 Aug. 2015. http://www.philly.com/philly/education/20150819_School_officials_slam_Pa__budget_stalemate.html
- ² "The Condition of Education 2015 At a Glance." National Center for Education Statistics. 2015. Retrieved from: http://nces.ed.gov/pubs2015/2015144_ataglance.pdf
- ³ "Five Key Questions about the State Agenda for Public Education." Education Law Center. July 2011. Retrieved from: http://www.elc-pa.org/wp-content/uploads/2013/11/ELC_Analysis_StateAgendaPublicEducation_7_26_11.pdf
- ⁴ Niederberger, Mary. "School Districts across Pa. Anticipate Increases, Staff and Program Cuts." Pittsburgh Post-Gazette. N.p., 16 June 2015. Web. <http://www.post-gazette.com/news/education/2015/06/16/7-of-10-Pa-school-districts-expect-to-raises-taxes-for-2015-16-school-year/stories/201506160168>
- ⁵ Sara K. Satullo | For Lehighvalleylive.com. "Lawmakers 'put Drillers before Our Students,' Official Says at Education Rally." N.p., 29 July 2015. Web. 31 Aug. 2015. http://www.lehighvalleylive.com/news/index.ssf/2015/07/we_cannot_continue_to_put_dril.html#incart_river
- ⁶ Karoly, Lynn A. The Economic Impact of Achievement Gaps in Pennsylvania's Public Schools. Santa Monica, CA: RAND Corporation, 2015. http://www.rand.org/pubs/research_reports/RR1159
- ⁷ "Patti Column: Basic Principles of School Funding." The Sentinel. N.p., 28 Mar. 2015. Web. 02 Sept. 2015. http://cumberlandlink.com/news/opinion/columnists/guest/patti-column-basic-principles-of-school-funding/article_81026347-d4e1-5a75-97fc-58be4ec71511.html
- ⁸ "Delco Educators Fear Effects of State Budget Standoff." Delcotimes.com. N.p., 18 Aug. 2015. Web. 31 Aug. 2015. <http://www.delcotimes.com/social-affairs/20150818/delco-educators-fear-effects-of-state-budget-standoff>
- ⁹ "Allentown School District Restores Related Arts, Holds Line on Taxes." Themorningcall.com. N.p., 26 June 2015. Web. 31 Aug. 2015. <http://www.mcall.com/news/local/allentown/mc-allentown-school-district-budget-20150626-story.html>
- ¹⁰ Express-Times, Colin McEvoy | "Divided Allentown School Board Signs off on 100 Cuts, including 74 Teachers." Lehighvalleylive.com. N.p., 27 Mar. 2014. Web. 31 Aug. 2015. http://www.lehighvalleylive.com/allentown/index.ssf/2014/03/divided_allentown_school_board.html
- ¹¹ "Connellsville School Officials Confirm Staff Furloughs; Board Looking at Tax Increase." TribLIVE.com. N.p., 03 June 2015. Web. 31 Aug. 2015. <http://triblive.com/news/fayette/8478938-74/district-board-mongell#axzz3k8rCH6zW>
- ¹² "Connellsville Receives Visit from Gov. Tom Wolf on His 'Schools That Teach' Tour." Heraldstandard.com. N.p., 22 July 2015. Web. 31 Aug. 2015. http://www.heraldstandard.com/new_today/connellsville-receives-visit-from-gov-tom-wolf-on-his-schools/article_c7917fac-34bb-5d19-96ca-0ec3b231f621.html
- ¹³ "Their View: Rural Districts Need Fair Spending Formula." CentreDaily.com. N.p., 1 May 2015. Web. 02 Sept. 2015. http://www.centredaily.com/2015/05/01/4728089_their-view-rural-districts-need.html?rh=1
- ¹⁴ "Otto-Eldred's Splain Campaigns for Basic Ed Funding Formula." The Bradford Era. N.p., 26 June 2015. Web. 31 Aug. 2015. http://www.bradfordera.com/news/article_ec941de4-1b9d-11e5-8dde-5750b75e6abc.html

Works Cited

- ¹⁵ “Gov. Wolf Talks Funding, Education with School, Local Officials at Pocono Mtn. West Jr. High.” Poconorecord.com. N.p., 27 May 2015. Web. 31 Aug. 2015. <http://www.poconorecord.com/article/20150527/NEWS/150529542>
- ¹⁶ “William Penn Struggles with Bleak Budget Numbers.” Delcotimes.com. N.p., 26 Apr. 2015. Web. 31 Aug. 2015. <http://www.delcotimes.com/social-affairs/20150426/william-penn-struggles-with-bleak-budget-numbers>
- ¹⁷ Hartman, William, and Timothy Shrom. Policy Brief Forecasting Fiscal Futures of Pennsylvania School Districts: Where Law and Current Policy Are Taking Our Public Schools. Rep. Center on Regional Politics, May 2015. Web. <http://www.cla.temple.edu/corp/files/2015/05/Fiscal-Futures-Hartman-Shrom-Web.pdf>
- ¹⁸ CONTINUED CUTS: The PASA-PASBO Report on School District Budgets. Rep. Pennsylvania Association of School Administrators & Pennsylvania Association of School Business Officials, June 2015. Web. http://files.pasbo.org/PASA-PASBOReport_Spring2015.pdf
- ¹⁹ Karoly, Lynn A. The Economic Impact of Achievement Gaps in Pennsylvania’s Public Schools. Santa Monica, CA: RAND Corporation, 2015. http://www.rand.org/pubs/research_reports/RR1159
- ²⁰ Yost, Berwood A., G. Terry Madonna, et al. “Survey of Pennsylvanians Summary of Findings.” Franklin & Marshall College Poll, August 2015. Retrieved from <http://www.fandm.edu/uploads/files/761140978937429246-franklin-marshall-college-poll-august-2015.pdf>
- ²¹ Morris, Joseph M., Rolfe D. Peterson and Dylan Radtke. “Wolf Agenda and 2016 Presidential Election: A Survey of 434 Registered Voters in Pennsylvania.” Mercyhurst Center for Applied Politics, 2015. Retrieved from http://www.mercyhurst.edu/sites/default/files/uploads/%3Cem%3Eedit%20Simple%3C/em%3E%20MCAP%20Polls%20/poll_3_final_report.pdf
- ²² “Nathan Mains: State Budget Impasse Puts Politics above the Needs of Students.” Themorningcall.com. N.p., 22 Aug. 2015. Web. 31 Aug. 2015. <http://www.mcall.com/opinion/yourview/mc-pennsylvania-budget-delay-affects-schools-mains-yv--20150822-story.html>